

# **Scorze Pipe Organ Samples**

**Personal Edition**

**for Hauptwerk™ 4.1**

**and Hauptwerk™ V**

## **User's Manual**

© Inspired Acoustics, a division of Entel Ltd, Hungary. All rights reserved.  
Printed in Hungary.

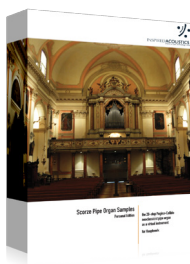
Version 2019/A

# Table of Contents

1.	<b>Welcome .....</b>	<b>5</b>
1.1.	Highlights .....	5
1.2.	What is contained inside the package .....	5
1.3.	Hardware and software requirements .....	6
2.	<b>Installation .....</b>	<b>7</b>
2.1.	Installation of the main organ .....	7
2.2.	Upgrading the Trial Edition .....	7
2.3.	USB license key authorization for Hauptwerk™ 4 .....	8
2.4.	License authorization for Hauptwerk™ V .....	8
3.	<b>Controls of the virtual pipe organ .....</b>	<b>9</b>
3.1.	Pages .....	9
3.2.	Keys and keyboards .....	10
3.3.	Stops .....	11
3.4.	Swellbox and Foot pistons .....	13
3.5.	The Dynamic KeyboardMass™ .....	14
3.6.	On-screen help .....	14
4.	<b>The Saint Benedict Church and its organ .....</b>	<b>15</b>
4.1.	The Saint Benedict Church .....	15
4.2.	The Organ .....	15
4.3.	Disposition .....	16
5.	<b>Usage terms and conditions .....</b>	<b>17</b>
5.1.	End-user license agreement (EULA) .....	17
5.2.	Trademarks .....	19
6.	<b>Partners and credits .....</b>	<b>20</b>



# 1. Welcome



Welcome to the Scorze Pipe Organ Samples and congratulations on your purchase!

Scorze Pipe Organ Samples is a neoclassical virtual pipe organ chromatically sampled stop-by-stop from Saint Benedict Church in Scorze, Italy.

The organ was built by the Pugina brothers in 1929, and has 20 stops on 2 manuals and a pedalboard.

The Scorze Pipe Organ Samples contributes financially to the upkeep of the original instrument.

## 1.1. Highlights

The organ has many special features, including:

- Multiple pages optimized for single and dual touch-screens in landscape and portrait view as well
- Freely configurable keyboards
- and more

## 1.2. What is contained inside the package

### 1.2.1. Contents of the box

If your version of the Scorze Pipe Organ Samples was delivered to you in a physical form rather than a download, please make sure you have the following contents in the box to ensure you have received a complete product:

- Delivery Medium - USB flash drive(s) containing the installation data.
- Your personal serial number on a printed registration card (in case of a retail box delivery)
- User's Manual (this document)

## 1.3. Hardware and software requirements

Scorze Pipe Organ Samples is hosted within Hauptwerk™ virtual pipe organ software, available for both PC and Mac computers from Milan Digital Audio, found at <http://www.hauptwerk.com> on the Internet. Hauptwerk™ functions with both currently available 32-bit and 64-bit operating systems. Hauptwerk™ Advanced Edition is recommended. A high-performance computer is required to experience full, flawless and convenient operation of this sample set.

### 1.3.1. RAM and number of loadable stops

Since Hauptwerk™ loads the sample data into the computer's random access memory (RAM) – and does not stream data from the hard disk – the amount of RAM determines the number of stops you can load for playing at a given time. The theoretical RAM limitation, per program instance is 4 GB in 32-bit operating systems; loading all stops of the organ requires a 64-bit operating system, capable of handling more than 4 GB of RAM. Regardless of operating system, please make sure you are using more than 4 GB of RAM.

Hauptwerk™ allows you to load the sample set with independent options for each available stop, allowing you to trade off the number of loadable stops with varying degrees of realism (you can, for example, choose to load less than the full complement of release samples). Loading all of the stops in their most complete multi-looped versions and with full release samples will consume much more RAM than loading them with, say, single looped data and/or truncated release tails.

Please refer to the Hauptwerk™ User's Manual for a complete description of how to maximize performance with these features.

Please refer to the Inspired Acoustics website for detailed RAM footprint guidelines at <http://www.inspiredacoustics.com>.

### 1.3.2. CPU and Polyphony

It is essential that your computer has a high-performance CPU in order to experience full polyphony without dropouts or audio distortion. A high polyphony capability is required when many stops are drawn and many notes played together.

---

**Note:** Polyphony is defined as the number of stops being selected, times the number of notes held per stop, including the duration release tails to sound, at any given time.

---

A series of fast staccato chords in Tutti will stress your computer the most, because the initial release tails will continue to sound as additional staccato chords are being played. For the most flawless operation, we recommend the use of a 4-core CPU or better, equipped with the most RAM that you can afford. As your CPU power increases, you can achieve more polyphony.

Please refer to the Hauptwerk™ User's Manual for a complete description of how to achieve maximum polyphony with your computer.

## 2. Installation

### 2.1. Installation of the main organ

Installing the Scorze Pipe Organ Samples requires that you own a registered, installed copy of Hauptwerk™ virtual pipe organ software, together with a registered, working dongle.

This installation procedure is for Hauptwerk™ version 4.x. If using a different version of Hauptwerk™, the required steps may be slightly different in detail; please refer to your version's copy of the Hauptwerk™ User Guide.

If you received the Scorze Pipe Organ Samples as a downloadable product, please make sure that you downloaded all the installation files before you begin installing. It is required to have all the files in the same folder.

If you received a retail box product you will need to insert the installation medium first, which should be one or more USB flash drives. Please connect it to your computer and navigate to the device to see the folders and files.

Wait until the computer recognizes the new drive and, either a drive letter is assigned to it (PC - Windows), or it is mounted on the desktop (Mac - OS X). Once your computer has accessed the USB drive proceed to the next step.

1. Launch Hauptwerk™ virtual organ software.
2. From within Hauptwerk™, go to the file menu and select 'Install organ, sample set, temperament or impulse response'.
3. The program will prompt you to select the program to install.
4. Navigate to the folder with the installation files and select the first file set to install.
5. Click Open and then click OK on the next screen.
6. Wait until Hauptwerk™ finishes installing the selected file then proceed with the installation of the next file.

Ensure that you have the latest version of the packages installed and apply any updates or upgrades that you have (see the next chapter to find out how).

We recommend first installing the Data and then the Organ component.

### 2.2. Upgrading the Trial Edition

Any updates or upgrades require the main organ to be installed first. All upgrades and updates come as separate installer files. Once you have all the files downloaded or received otherwise on your computer, please install them. The procedure for installing upgrades and updates is the same as the normal installation process.

To obtain the latest updates you need to register your copy. To do this:

1. Go to <http://www.inspiredacoustics.com>
2. Create an account if you do not already have one by clicking on the Sign Up link.
3. In case you received a boxed product click the Register menu at the Inspired Acoustics website and enter your serial number that you received. If you do not have such a number, please contact us.
4. After you are registered, go to the 'My products' section and you will find your product and its Update files within a few minutes.
5. Download the package that has the name 'LATEST' written in it. Install this package, once downloaded, following the procedure above in chapter 2.1. If there is no such package, you already have the latest version on your computer.

For the smoothest operation, please ensure that you have the latest version of your product, so please download and install this file once a new version becomes available. This file is made so that it will update your organ to the latest version regardless of what version you have.

## 2.3. USB license key authorization for Hauptwerk™ 4

The sample set comes in a Hauptwerk-specific encrypted format requiring a Hauptwerk USB key, compatible with Hauptwerk 4.0, 4.1, 4.2 and later. In order to use Scorze Pipe Organ Samples, you do not need a license update to your current USB dongle.

## 2.4. License authorization for Hauptwerk™ V

This sample set comes in an encrypted format compatible with Hauptwerk V. No activation procedure is needed to use this sample set, but Scorze Pipe Organ Samples requires the presence of a Hauptwerk V evaluation, subscription or perpetual license.

Modification or disassembling the organ contents through the CODM interface of Hauptwerk is not supported since the variety of functions, the large number temperament data and the availability of the special built-in perspective adjustment already offers most of the functions or more than what the CODM interface may offer. The complexity of the Organ Definition File shipping with this organ is fairly high and building custom variants requires a certain amount of special expertise. If you are planning a custom or commercial application that requires a different setup what Scorze Pipe Organ Samples offers now, please contact us for making a customized version for you.



### 3. Controls of the virtual pipe organ

The console and controls of the virtual organ are similar to the original instrument. The main console was modeled.

#### 3.1. Pages

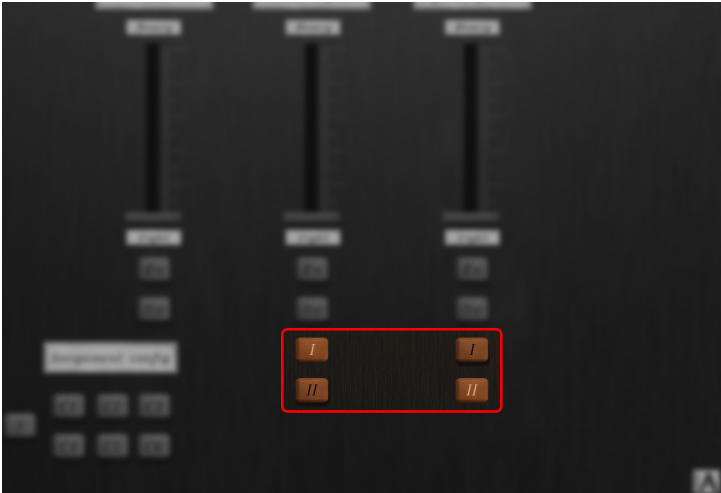
The organ controls are organized into so-called “Pages” in the Hauptwerk™ program, to allow convenient operation. Each page of this virtual instrument plays a different role, and allows you to control and monitor the organ’s numerous features in a convenient way. The following table summarizes the contents of each page.

Page name	Description	What is it for?
Console	Overview of the organ console	Check, control, observe and demonstrate everything on one screen, including keyboard, pedal and swell box.
Center	Organ console: all control elements except keys on one single page, modified for convenient control	For systems with a single touch display screen, this page allows you to control all stops and miscellaneous functions.
Left	Organ console: stops and control elements of the left side, close-up, modified for convenient control	For systems with two individual touch screens, you can place this screen to the left of the keyboard, to control the left bank of stops and miscellaneous functions.
Right	Organ console: stops and controls elements of the right side, close-up, modified for convenient control	For systems with two individual touch screens, you can place this screen to the right of the keyboard, to control the right bank of stops and miscellaneous functions.
Keyboards	Keyboard mass control	Virtual controls for the Keyboard Mass™ functionality allowing you to change the response and inertia of the keyboards.  Keyboard and swell pedal to manual assignment.

## 3.2. Keys and keyboards

All keys and keyboards are shown in a photo-realistic perspective view, fully responsive to mouse control. The notes, pedal keyboard and swellbox pedal all faithfully mirror your performance intentions.

The instrument has 3 divisions: two 58-note manuals and a 30-note set of pedals.



The first division is called Grand'Organo, and on the control pages it is referred to as "I". By default the 1<sup>st</sup> manual is dedicated to sound this division.

The second division, called Organo Espressivo belongs to the 2<sup>nd</sup> manual by default, and is referred to as "II" on control switches and tables.

The pedal division is referred to as "Ped".

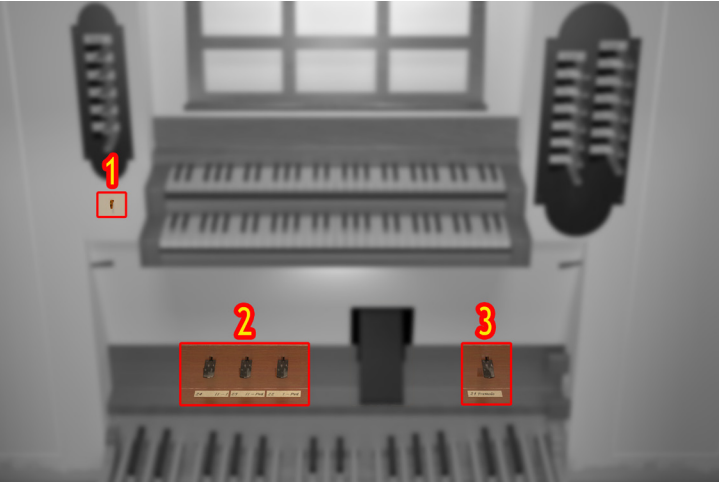
Although every division has its dedicated manual or pedalboard, all of them are floating divisions. This means that every division can be played using any keyboard, or even the pedalboard. Such operating modes can be set up on the Keyboards Page by assigning any division to any manual (see the figure above).

### 3.3. Stops

The console of the organ features drawknob stopswitches: their drawn position indicates that the stop is engaged. There are various “Pages” in the Hauptwerk™ displays containing close-up images of the stops. If you manipulate the stops or controls on one page and their corresponding on/off status will be synchronized with the other pages as well.

#### 3.3.1. Console page functions

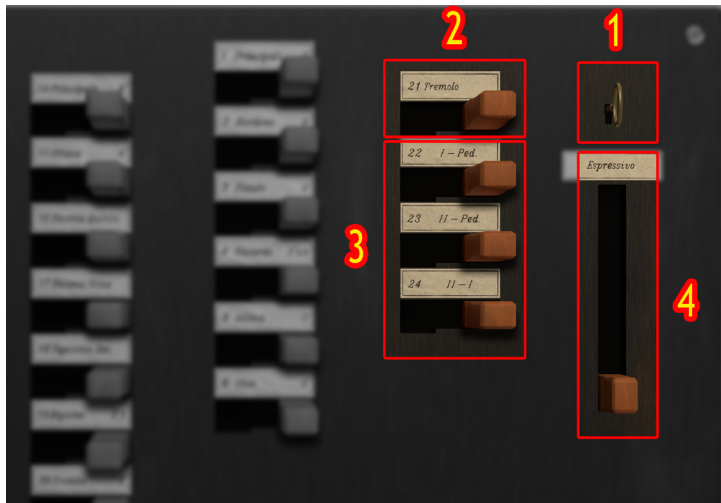
The following figure shows the functions of the Console Page highlighted.



Function		Effect
1		Turns the organ engine noise on/off
2		Couplers
3		Enables the tremulant

### 3.3.2. Center/Left/Right page functions

The following picture shows the functions of the Center Page highlighted. Equivalently labeled controls on the Left or Right Pages are also present.



Function	Effect
1	Turns the organ engine noise on/off
2	Enables the tremulant
3	Couplers
4	Swell pedal

### 3.4. Swellbox and Foot pistons

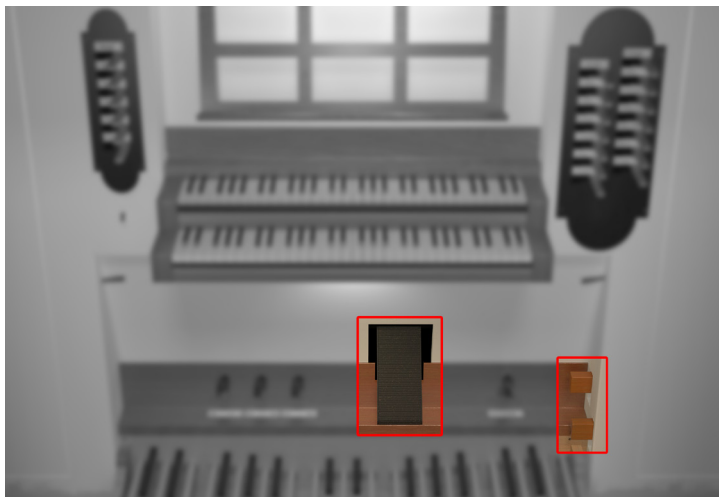
The swellbox is an enclosure with vertical venetian blind-type shutters controlled by the swell pedal (or 'swell shoe'). As a given shutter closes, the pipes contained in that swellbox will sound quieter and darker (with lesser amounts of high overtones). The Scorze Organ's swellbox characteristics are brought to life through modeling.

The Scorze pipe organ contains a MIDI assignable swellbox pedal and all divisions are virtually enclosed. This means that once you assign the swellbox pedal to an enclosed division you can control its state instantly. To assign the swell pedal to various enclosures, you can use the assignment buttons on the Keyboards Page.

For example, if you would like to control the Grand' Organo and the Organo Espressivo together with the pedal, just assign both of them to swell pedal by pressing "Sw". The state of the swell pedal is set to default once you assign them to an other division.

The Scorze organ has 2 fully mechanical combination programs. The first, closer to the organ is called "All G.O.", and the second one closer to the organist is called "Ance". The stops of the tutti programs can be called by switching on the desired foot piston.

The figure below shows the Console Page, highlighting the swell pedal in the middle and the Foot pistons on the right.



### 3.5. The Dynamic KeyboardMass™

Keyboards and tracker actions of pipe organ have mass and hence inertia, which describe their response while you play. The Dynamic KeyboardMass™ is a special feature in the Scorze Pipe Organ Samples that allows you to simulate and control each of the organ's keyboards heaviness independently, even if your keyboard controller does not support any dynamics at all. This revolutionary feature adds a new layer of realism playing the virtual pipe organ.

The Dynamic KeyboardMass™ model sets the response of both the speaking and the release part of the pipe sound simultaneously and dynamically, adapting itself to your actual keypresses. Practically this makes the virtual organ a living instrument and ensures that the virtual instrument remains very responsive even if you set it to have very heavy keyboards.

On the Keyboards Page, 3 faders are displayed, each dedicated to a specific manual, and the pedalboard. The faders can be set from light to heavy keyboard mass, independently from each other.

### 3.6. On-screen help

The Keyboards Page has an on-screen help option which you can activate or deactivate by pressing the "?" button in the top right corner of the page.



## 4. The Saint Benedict Church and its organ

### 4.1. The Saint Benedict Church

The Saint Benedict Church (Scorze, Italy) was built between 1761 and 1767 from the plans of architect Giorgio Masari, and was consecrated in 1767 by bishop Francesco Paolo Giustiniani. The building has undergone a general restoration in 2012. At the end of the restoration in 2013, Bishop Gianfranco Agostino Gardin has consecrated the new altar.

The bell tower in the churchyard originates from the sixteenth century, is 50 meters high and it was finished in 1767.

The entrance of the church is topped by the statue of the patron St. Benedict with St. Lucia and St. Agnes on its side, by Francesco Androsi. The Saint Benedict Church, besides the main altar, has four side altars. The painting on the high altar is Paolo Pino's work, and the statues made by Giuseppe Bernardi. The remarkable fresco on the ceiling is the "Ascension" by Giovan Battista Canal.



### 4.2. The Organ

The Pugina-Callido organ built is in neoclassical style and has 20 stops on two manuals and pedalboard.

The organ was constructed by the Pugina brothers, but parts of the organ originate from the St. Agnes Church's organ in Venice, from an earlier work of the famous organ builder Gaetano Callido. The construction of the organ was finished in 1929, and has been restored by Francesco Zanin in 2010.

### 4.3. Disposition

The disposition of the Scorze organ is as follows:

Grand'Organo		
7	Unda Maris	8'
8	Flauto	8'
9	Flauto	4'
10	Ottavino	2'
14	Principale	8'
15	Ottava	4'
16	Decima Quinta	2'
17	Decima Nona	1 1/3'
18	Vigesima Seconda	1'
19	Ripieno II	2/3'
20	Tromba	8'
Organo Espressivo		
1	Principale	8'
2	Bordone	8'
3	Flauto	8'
4	Nazardo	2 2/3'
5	Ottava	2'
6	Oboe	8'
Pedale		
11	Contrabasso	16'
12	Ottava	8'
13	Trombone	16'



## 5. Usage terms and conditions

### 5.1. End-user license agreement (EULA)

YOU SHOULD CAREFULLY READ ALL OF THE FOLLOWING TERMS AND CONDITIONS BEFORE USING THIS PRODUCT. INSTALLING AND USING THE PRODUCT INDICATES YOUR ACCEPTANCE OF THESE TERMS AND CONDITIONS. IF YOU DO NOT AGREE WITH THEM, YOU SHOULD PROMPTLY RETURN THE PRODUCT UNUSED.

**GRANT OF LICENSE.** In consideration of payment of the license fee, Entel Ltd. Inspired Acoustics division (“Entel”) grants to you, the Licensee, a nonexclusive, nontransferable license to have one person use the enclosed Inspired Acoustics software product (the “Product”) on one personal computer at a time. If you want to use the Product on more than one personal computer at a time you must obtain separate licenses. All rights not expressly granted to Licensee are reserved to Entel.

**OWNERSHIP OF THE PRODUCT.** Portions of the Product may incorporate certain material proprietary to third parties. Entel and licensors of Entel own and will retain all title, copyright, trademark and other proprietary rights in and to the Product. This License is not a sale of the Product or any copy of it. You, the Licensee, obtain only such rights as are provided in this Agreement. You understand and agree as follows: you may not make any copies of all or any part of the Product except for archival copies of the computer software components of the Product as permitted by law; you may not reverse compile/assemble/engineer, modify, or incorporate in whole or in part in any other product or create derivative works of similar purpose of the Product based on all or any part of the Product; you may not extract or measure contents of the Product for any purpose; you may not represent the origin (i.e. recording place) of your derivative works (i.e. recording) using the names of locations or places of the Product; you may not remove any copyright, trademark, proprietary rights, disclaimer or warning notice included on or embedded in any part of the Product. You may not transfer or resell the Product and this license expressly forbids resale, re-licensing or other distribution of the Product unless an applicable law permits this or without the expressed written permission of Entel. You cannot sell, loan, rent, lease, assign or transfer all or any of the enclosed sounds in the Product to another user, or for use in any competitive product(s) without the expressed written permission of Entel.. If transferred, in whole or in part, the original and subsequent owners forfeit all rights to use the software. You may not use the documentation for any purpose other than to support your use of the Product; you may not perform engineering analyses of the Product, including quality, performance or benchmark analyses, without the expressed written permission of Entel.

**USE OF AUDIO SAMPLES.** The audio samples, recorded sounds, programs, presets used by or included in the Product remain the property of Entel and are licensed, not sold, to you for use on your computer. Licensee may use the Product for Commercial Purposes within musical compositions, and may create derivative works of different purpose than the Product such as sound recordings or performances of musical compositions, based

on the Product and may also sell these derivative works without paying any further royalties to Entel. However, Licensee is strictly forbidden to: (1) falsely represent that the derivative work, such as but not limited to a sound recording or a movie soundtrack, was played on the actual instrument the Product is virtualized from or any other real instrument whatsoever; (2) download or use the samples in different format or with different software the Product was originally designed for. Licensee is strictly forbidden to display or use for any purpose or in connection with any of Licensee's derivative works the name(s) or other representations of (1) the halls, institutions or locations of the instrument(s) from where the Products are virtualized from; (2) the place of these locations; or (3) the manufacturer(s) of the original instruments.

**RESPONSIBILITIES.** Entel hopes the Product will be useful to your business or personal endeavors. However, Entel does not warrant the operation of the Product or the accuracy or completeness of any information contained in the Product. You, and not Entel, are responsible for all uses of the Product.

**LIMITED WARRANTY.** Entel warrants to you, the original licensee, that the media on which the Product is recorded will be free of defects in material and workmanship under normal use for a period of thirty (30) days from purchase, and that the Product will perform substantially in accordance with the user guide for a period of thirty (30) days from purchase. Entel's sole responsibility under this warranty will be, at its option, (1) to use reasonable efforts to correct any defects that are reported to it within the foregoing warranty period or (2) to refund the full purchase price to you. Entel does not warrant that the Product will be error free, nor that all program errors will be corrected. In addition, Entel makes no warranties if the failure of the Product results from accident, abuse or misapplication. Remedies are available with a proof of purchase from an authorized international source. All requests for warranty assistance shall be directed to Entel at the following address: H-1301 Budapest, Pf. 94. Hungary. +36/1/3360400. The expressed warranty set forth in this Agreement is the only warranty given by Entel with respect to the entire Product. Entel makes no other warranties, expressed, implied or arising by custom or trade usage, and specifically disclaims the implied warranties of non-infringement, merchantability or fitness for any particular purpose. Entel shall not be responsible for the performance of the Product nor for any liability to any other party arising out of use of the Product. Entel's liability in contract, tort or otherwise arising in connection with the Product shall not exceed the purchase price of the Product. In no event shall Entel be liable for special, incidental, tort or consequential damages including any damages resulting from loss of use, loss of data, loss of profits or loss of business arising out of or in connection with the performance of the Product, even if Entel has been advised of the possibility of such damages.

**TERMINATION.** This License Agreement will terminate immediately if you breach any of its terms. Upon termination, you will be required promptly to return to Entel or to destroy all copies of the Product covered by this License Agreement.

**GOVERNING LAW.** The terms of this License shall be construed in accordance with the substantive laws of Hungary (European Union).

NO WAIVER. The failure of either party to enforce any rights granted in this Agreement or to take any action against the other party in the event of any breach of this Agreement shall not be deemed a waiver by that party as to subsequent enforcement of rights or subsequent actions in the event of future breaches.

LITIGATION EXPENSES. If any action is brought by either party to this Agreement against the other party regarding the subject matter hereof, the prevailing party shall be entitled to recover, in addition to any other relief granted, reasonable attorneys' fees and litigation expenses.

UNENFORCEABLE TERMS. Should any term of this License Agreement be declared void or unenforceable by any court of competent jurisdiction, such declaration shall have no effect on the remaining terms hereof.

YOU ACKNOWLEDGE THAT YOU HAVE READ THIS LICENSE AGREEMENT, UNDERSTAND IT AND AGREE TO BE BOUND BY ITS TERMS AND CONDITIONS. YOU FURTHER AGREE THAT IT IS THE COMPLETE AND EXCLUSIVE STATEMENT OF THE LICENSE AGREEMENT BETWEEN YOU AND ENTEL WHICH SUPERSEDES ANY PROPOSAL, OR PRIOR AGREEMENT, ORAL OR WRITTEN, AND ANY OTHER COMMUNICATIONS BETWEEN YOU AND ENTEL RELATING TO THE SUBJECT MATTER OF THIS LICENSE AGREEMENT.

## 5.2. Trademarks

Inspired Acoustics™ and Entel® are trademarks, or registered trademarks of Entel Ltd. in Hungary, the European Union and/or other countries. All other company, brand and product names may be registered trademarks, trademarks or service marks of their respective companies and are hereby recognized.



## 6. Partners and credits

The Scorze Pipe Organ Samples was created by the Inspired Acoustics team. The team would like to thank to Giuseppe Iampieri, Roberto Scarpa Meylougan and the staff of the Saint Benedict Church - Scorze, Italy.



INSPIREDACOUSTICS.