

Palace of Arts Budapest Pipe Organ Samples

Trial Edition

for Hauptwerk™ 3

User's Manual

© Inspired Acoustics, a division of Entel Ltd, Hungary. All rights reserved.

Version 2009|A

Table of contents

1	Welcome	4
	1.1 Highlights	4
	1.2 Contents	5
	1.3 Trial restrictions	5
	1.4 Unlocking your Trial Edition	5
	1.5 Hardware and software requirements	6
2	Installation	8
3	Controls of the virtual pipe organ	9
	3.1 Pages	9
	3.2 Keys and keyboards	10
	3.3 Stops	10
	3.4 Buttons	10
	3.5 Swellboxes	12
	3.6 Light Emitting Diode (LED) Numeric Indicators	12
	3.7 Crescendo wheel (Walze)	13
	3.8 Independent Combination Action	14
4	Known issues	17
	4.1 Hauptwerk™ loads this organ more slowly than other organs	17
	4.2 Limitations in assigning MIDI messages at this time of writing	17
5	Usage terms and conditions	18
	5.1 End-user license agreement (EULA) – Trial Version	18
6	Partners and credits	20

1 Welcome

Welcome to the Trial Editions of one of the largest virtual pipe organs in the world!

Palace of Arts Budapest (PAB) Pipe Organ Samples is a fully playable, freely configurable, intuitively manageable and MIDI-controllable virtual pipe organ, delivering the authentic sound of the 92-stop Pécsi-Mühleisen pipe organ of the Béla Bartók National Concert Hall of the Palace of Arts – Budapest, Hungary.

Designed for operation within Hauptwerk™ software, on both PC and Macintosh computers, Palace of Arts Budapest Pipe Organ Samples sets a new standard in virtual pipe organs used by leading organists, professional musicians, professors and tutors, educational, worship and culture institutions, recording professionals and enthusiasts.



Despite its immense size and capabilities, it is a pipe organ you can play and take with you wherever you go, offering unprecedented flexibility and sound quality never heard before in a virtual instrument.

1.1 Highlights

The organ has many unique features, including:

- Fully functional Combination Action exactly duplicating the real organ, *independent of Hauptwerk™'s combination action*, controllable directly from the screen or by means of MIDI. (see *Chapter 3.8*)
- 61-stage crescendo (see *Chapter 3.7*)
- Multiple pages optimized for single or dual touch-screens. (see *Chapter 3.1*)
- and more

1.2 Contents

The following table summarizes the stops that are included in the Trial Edition.

Trial Edition (15 stops)
Pedal (C-g')
Soubasse 16'
Octavbass 8'
I. Manual, Grande orgue (C-c''')
Principal 8'
Bourdon 8'
Praestant 4'
Rohrflöte 4'
Superoctave 2'
Mixtur 5-7x 22/3'
II. Manual, Positif expressif (C-c''')
Cor de nuit 8'
Flûte traversière 8'
Salicional 8'
Flûte conique 4'
Quinte 22/3'
Doublette 2'
Cromorne 8'

1.3 Trial restrictions

The Trial Edition is equivalent in sound content to the Small Edition, the only limitation is that in each minute the sound is disabled for a few seconds, and it works for 15 minutes each time it is loaded.

1.4 Unlocking your Trial Edition

Unlocking your Trial Edition is easy. If you visit the Inspired Acoustics website to purchase any of PAB Products, your Trial Edition will be either upgraded or replaced by one of the fully functional editions.

1.5 Hardware and software requirements

Palace of Arts Budapest Pipe Organ Samples is hosted within Hauptwerk™ virtual pipe organ software, available for both PC and Mac computers from Milan Digital Audio, found at <http://www.hauptwerk.com> on the Internet. Hauptwerk™ functions with both currently available 32-bit and 64-bit operating systems. Hauptwerk™ Advanced Edition is recommended. A high-performance computer is required to experience full, flawless and convenient operation of this library.

1.5.1 RAM and number of loadable stops

Since Hauptwerk™ loads the sample data into the computer's random access memory (RAM) – and does not stream data from the hard disk – the amount of RAM determines the number of stops you can load for playing at a given time. The theoretical RAM limitation, per program instance is 4 GB in 32-bit operating systems; loading all stops of the organ requires a 64-bit operating system, capable of handling more than 4 GB of RAM. Regardless of operating system, please make sure you are using more than 4 GB of RAM.

Hauptwerk™ allows you to load the library with independent options for each available stop, allowing you to trade off the number of loadable stops with varying degrees of realism (you can, for example, choose to load less than the full complement of release samples). Loading all of the stops in their most complete multi-looped versions and with full release samples will consume much more RAM than loading them with, say, single looped data and/or truncated release tails.

Please refer to the Hauptwerk™ User's Manual for a complete description of how to maximize performance with these features.

Hauptwerk™ offers lossless compression for sample loading. We recommend turning this option ON when loading the samples, since it does not affect the quality of sound, but increases the number of stops one can load at a time.

The following table summarizes the loading requirements for the instrument.

RAM requirements for PAB Trial Edition

Loading setup	Bits	Multiple Loops	Multiple Releases	Subjective Quality	Required RAM
Trial Edition, all 15 stops	24	all	all	maximum	4.4 GB
Trial Edition, all 15 stops	16	all	all	almost maximum	2.4 GB

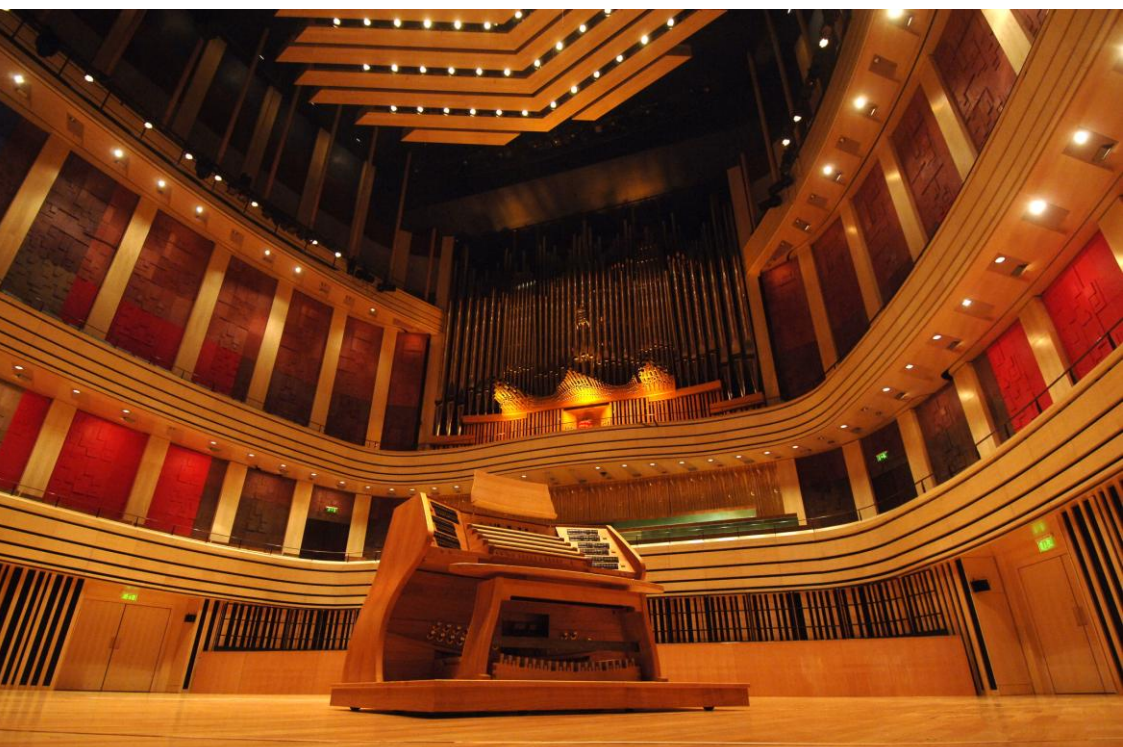
1.5.2 CPU and Polyphony

It is essential that your computer has a high-performance CPU in order to experience full polyphony. A high polyphony capability is required when many stops are drawn and many notes played together.

Note: Polyphony is defined as the number of stops being selected, times the number of notes held per stop, including the duration release tails to sound, at any given time.

A series of fast staccato chords in Tutti will stress your computer the most, because the initial release tails will continue to sound as additional staccato chords are being played. For the most flawless operation, we recommend the use of a 4-core CPU or better, equipped with the most RAM that you can afford. As your CPU power increases, you can achieve more polyphony.

Please refer to the Hauptwerk™ User's Manual for a complete description of how to achieve maximum polyphony with your computer.



2 Installation

Installing the PAB Pipe Organ Samples requires that you own copy of Hauptwerk™ virtual pipe organ software. Please do not attempt to install the PAB library unless you have a working copy of Hauptwerk™ installed in your computer.

This installation procedure is for Hauptwerk™ version 3.11. If using a later version of Hauptwerk™, the required steps may be slightly different in detail; please refer to your version's copy of the Hauptwerk™ User Guide.

1. Please download the 2 installer files of the Trial Edition if you do not have it already on your computer.
2. Launch Hauptwerk™ virtual organ software in the “standalone” mode.
3. From within Hauptwerk™, go to the file menu and select Install organ, sample set, temperament or impulse response
 - a. The program will prompt you to select the organ to install.
 - b. Navigate to the folder containing the installer and select the first file set (installation package) to install. All of the available file sets should be installed in order to make the library work.
 - c. Click Open and then click OK on the next screen.
 - d. Wait until Hauptwerk™ finishes installing the file you have selected.
4. Repeat Step 3 until all files are installed.

3 Controls of the virtual pipe organ

The organ at the Palace of Arts – Budapest contains two working consoles: the upper console, integrated into the main body and pipe case of the organ; the lower (or “stage”) console is a movable console, capable of placement at center stage as a solo instrument, or located to either side of the stage during orchestral productions.

Inspired Acoustics has taken extraordinary measures to reproduce every possible sonic nuance of the original pipe organ, and provide every control feature of its stage console in the virtual instrument format. Some features – previously not available in Hauptwerk™ software – were developed by Inspired Acoustics in order to maximize the convenience of your playing experience.

3.1 Pages

The organ controls are organized into so-called “Pages” in the Hauptwerk™ program, to allow convenient operation. Each page of this virtual instrument plays a different role, and allows you to control and monitor the organ’s numerous features in a convenient way. The following table summarizes the contents of each page.

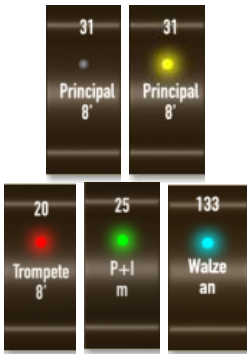
Page name	Description	What is it for?
Console	Overview of the stage console.	Check, control, observe and demonstrate everything on one screen, including keyboard, pedal, swell box and crescendo wheel movements.
Center	Stage console: all control elements except keys on one single page, modified for convenient control.	For systems with a single touch display screen, this page allows you to control all stops, combination action and miscellaneous functions
Left	Stage console: stops of the left side, close-up, modified for convenient control.	For systems with two individual touch screens, you can place this screen to the left of the keyboard, to control the left bank of stops, just as on the real instrument.
Right	Stage console: stops of the right side, close-up, modified for convenient control.	For systems with two individual touch screens, you can place this second screen to the right of the keyboard, to control the right bank of stops, just as on the real instrument.
Crescendo 1	Programmable crescendo, page 1	These pages allow you to program the pipe organ’s 61-stage crescendo wheel to any desired custom configuration.
Crescendo 2	Programmable crescendo, page 2	

3.2 Keys and keyboards

The virtual instrument boasts the Palace of Arts Budapest’s full five 61-note manuals and a 32-note set of pedals. All keys and keyboards are shown in a photo-realistic perspective view, fully responsive to mouse control. The notes, pedal keyboard, swellbox pedals and crescendo wheel all faithfully mirror your performance. The Trial Edition has 2 working manuals and a pedal.

3.3 Stops

The stage console of the organ features pushback key stops with colored lights indicating their functional states. Indicator lights come on when individual stops or controls are drawn. There are various “pages” in the Hauptwerk™ displays containing close-up images of the stops. If you manipulate the stops or controls in one page, their on/off status will be synchronized with the other pages as well.



Color	Meaning
yellow	flue pipes and electrical couplers
red	reed pipes
green	mechanical couplers
cyan (blue)	controls related to the crescendo wheel (called the “walze” in the stoplist)

3.4 Buttons

The stage console has several button controls for use during live performance. Some of these buttons control additional sounds, such as the engine Motor; other buttons control or trigger functions, such as the Combination Action or the temporary removal/restoration of reed stops.

3.4.1 Optional Engine Sounds (Motor)



The Motor and the Tuba button are buttons that will optionally turn on the organ motors. The real organ has a separate electric motor for the stop Tuba Mirabilis 8' on the 4th (Solo) manual. The virtual instrument however allows you to play all stops without any motor noise at all, allowing the creation of super-high-quality totally noise-free recording, something that is (naturally) not even achievable on the real instrument. For those seeking ultimate realism, just turn on the motors!

3.4.2 All reeds off button (-Z)



This button, available as both a foot piston on the Console Page and as a separate button with the label -Z, will temporarily disable the reeds from any active configuration of stops.

Interesting fact: Letter Z denotes *Zungen*, the German name of Reeds.

3.4.3 Plenum and Tutti buttons (PL and TT)

PAB Pipe Organ Samples Trial Edition ships with pre-programmed Plenum and Tutti combinations (PL and TT, respectively) for your convenience. If you have not had time (or are disinclined) to prepare preset combinations, just press either of these buttons, and you will get moderate-level or full-level sound, as desired.

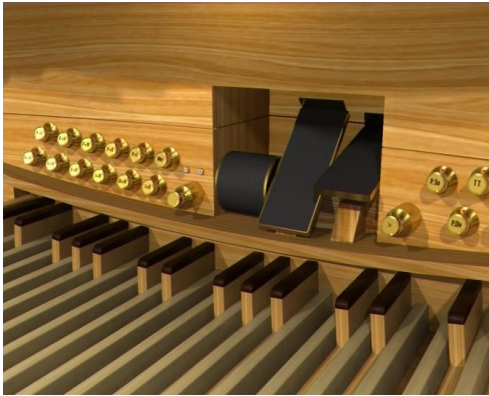
This feature is available both as foot pistons marked as PL and TT and as square-shaped wooden buttons on the Center, Left and Right pages.

3.4.4 Cancel and Zero buttons

Due to the large number of stops in this organ, it is not easy to turn off all stops manually. To make this easier, there are Cancel and Zero buttons. Cancel buttons turn off each manual's stops independently, while the Zero button turns all stops and couplers off with a single click, and will also deactivate the PL and TT pistons. The Cancel buttons are located near the stop switches and are labeled with the name of their respective manual.

The Zero or general cancel button turns all stops and couplers off. In Palace of Arts Budapest Pipe Organ Samples it is marked with a zero sign Ø and is located on the right side beneath the first manual on the Console Page.

3.5 Swellboxes



Left pedal: manual II. (Positiv expr.)

Right pedal: manual III. (Récit expr.) *(not operational in the Trial Edition)*

Swellbox Condition: ‘heels up’ means swellbox shutters are opened.

Swellboxes are enclosures with vertical venetian blind-type shutters controlled by the swell pedals (or ‘swell shoes’). As a given shutter closes, the pipes contained in that swellbox will sound quieter and darker. The Palace of Arts organ’s swellbox characteristics, through careful measurement and accurate modeling, are brought to life with breathtaking realism.

3.6 Light Emitting Diode (LED) Numeric Indicators



The original organ is equipped with various numeric indicators on the stage console, to assist the organist in determining the status of combination, divisional and crescendo settings.

The Combination label represents the status of PAB’s proprietary combination action, ranging from 000 to 029 in the Trial Edition, each number representing a user-programmable combination bank or frame.

The Walze label has two sets of matrix LEDs that represent the operating status of the crescendo wheel: the left Walze display identifies the currently selected crescendo program. The right Walze display shows the actual state of wheel position, from 00 (start of wheel program) to 60 (end of wheel program).



The Positiv and the Récit indicators portray the current positions of the swellbox shutters: from 00 (fully closed) to 20 (fully open).

3.7 Crescendo wheel (Walze)



The crescendo wheel is an axially rotating drum operated by foot control, and is used in place of a conventional crescendo pedal. The Walze is positioned to the left of the foot-operated swellbox pedals. Sliding (rolling) it forward from position 00 to a higher position triggers stops in a preset user-defined manner, according to the sequence contained in the respective Crescendo Program. Cyan lighted stops control the crescendo wheel located in the bank of Manual IV. (Solo) stops.

Note: To enable the crescendo program, turn on the stop *133 Walze An*.

		Stop switch	Effect
	133	Walze an (Walze On)	Crescendo wheel enabler
	134	Koppeln aus Walze (Couplers off Walze)	Disables couplers from the current crescendo wheel position
	135	Mixturen aus Walze (Mixtures off Walze)	Disables mixture stops from the current crescendo wheel position
	136	Zungen aus Walze (Reeds off Walze)	Disables reed stops from the current crescendo wheel position

Note: You must turn on Stop #133 Walze An to enable the crescendo wheel. If you enable the wheel on a non-zero position of the crescendo wheel, such as 26 for example, the corresponding combination will load.

The virtual instrument supports multiple crescendo programs. While two programs are pre-loaded in the instrument, you can freely modify any of them. The crescendo has 61 stages, from 00 to 60, inclusive.



To toggle the crescendo program between #1 and #2, and back again, push the button labeled **WD**.

You will find this button near the Crescendo Indicator. If the current program is the last and you push this button, you will be brought back to the first program.

3.8 Independent Combination Action

The Combination Action of the PAB Pipe Organ Samples is totally unique amongst Hauptwerk™ organ libraries. For the first time, you can control different sets of stops (combinations) stored in the organ's internal memory by a single click or touch, *right from the graphical interface*.



This amazing feature is completely independent of Hauptwerk's™ own combination action system, allowing more convenient use and the possibility to register the virtual organ's stop list in exactly the same way as the real organ.

The key element of PAB's Combination action is the "Increment" and "Decrement" button array, clearly marked with left- and right-facing triangles.

Combination action is used to access presets of different stop configurations with a single click, an essential feature when performing organ pieces in real time.

3.8.1 Features

Each Edition of PAB Pipe Organ Samples is capable of storing different numbers of combinations within its internal memory; the Trial Edition can store up to 30 programs ranging from 000 to 029. You can save and load these programs into a single file by using Hauptwerk™'s built-in Save and Load functionality in the Combinations menu (as of Hauptwerk™ Version 3.11).

The Combination Action, or "Setzer" in its Germanic name, is accessed and controlled by a group of dedicated buttons. Ten numerical buttons (numbered 0 - 9) can directly access the first ten memory positions, and are also used in conjunction with the four buttons marked with arrow-like triangles, permitting rapid navigation within the combination memory. The up-down arrow buttons advance/decrement the selection by 'tens', while the left-right buttons advance/decrement by 'ones' (see below). The S key is used to Set combinations in memory.

3.8.2 Programming and resetting from Graphical User Interface (GUI) or Musical Instrument Digital Interface (MIDI)

Once you define a stop configuration on the console that you wish to save as a combination preset (also called a "frame"), press the S button once, and then press either a number or a navigation key to select which combination frame you want to program. If you



select the same number that was previously active, the previous combination will be overwritten with the new one.

Hint: The easiest way to program a particular stop combination into the next frame is to press the S set button and then press the increment button. This will program the currently set configuration to the next frame and increment the current frame by one to that frame – with a single click.

You can also assign MIDI messages to these buttons so that, if you have a MIDI-capable console, all these functionalities can be directly available to you in physical form as well.



3.8.3 Navigation and use during organ play

Navigating between different combination frames is very easy. You can increment and decrement the current frame by one using the buttons below:

Button	Effect
	Decrement the current combination frame by one number (previous)
	Increment the current combination frame by one number (next)

There are also “Up” and “Down” buttons, to make navigation even easier. The up and down buttons increment and decrement the combination frames by “tens”. It is a simple matter to use these buttons together with the numerical buttons to quickly navigate to the desired combination frame.

For Example: If you wish to change from combination frame 004 to 025, this is possible by just three clicks. Push the button UP twice (to go from “00_” to “02_”, and then press button 5 to get you to “025”. The newly chosen combination will only be changed when you push the third numerical digit you wish you reach, e.g. number 5. In this way, you can navigate easily, conveniently, and safely.

Button	Effect
	Navigate the system to the next tens of combination without changing the current combination. Then, push one of the number buttons to access the desired combination frame directly.
	Navigate the system to the previous tens of combination without changing the current combination. Then, push one of the number buttons to access the combination frame directly.

3.8.4 Loading and saving Combinations to files

Saving entire banks of combinations is just as easy as saving Hauptwerk's™ own combinations, and can be configured using the same commands.

3.8.5 Combination frame advancement buttons beneath the keyboards and Seq+



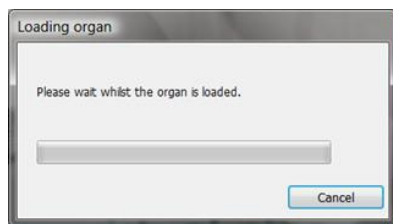
Below each manual on the Console page you will find two small black buttons. These buttons increase and decrease the current frame of the combination action, e.g. from 000 to 001 or vice versa if they are enabled only with the Seq+ button. You will find Seq+ on the top left of the console on the Console Page.

These features were made available should you construct a real organ console with such features and wish to equip it with suitable MIDI control. You will find it very convenient to play and develop stop/combination registration with the help of these buttons.

4 Known issues

4.1 Hauptwerk™ loads this organ more slowly than other organs

This is a result of the tremendous number of switch linkages and logic in the organ definition file that describes the PAB Organ. Depending on the speed of your computer, you may need to wait from a few seconds to a few minutes before the Rank Page is displayed in Hauptwerk™. This is normal, so there is no workaround for this; please wait while Hauptwerk™ finishes processing the organ definition file.



It may take about a few minutes to load the organ for the first time after the Rank Page was displayed. This is because first Hauptwerk™ generates a cache file to allow faster subsequent loadings. Using the cache, Hauptwerk™ will load the organ in about 1-3 minutes.

4.2 Limitations in assigning MIDI messages at this time of writing

Although it may be possible in future releases of Hauptwerk™, the current Version 3.11 and earlier, unfortunately, do not support assigning MIDI program change increment and decrement messages to the custom combination frame buttons < and > that increment and decrement PAB's custom combination frames, available on the graphical user interface. You can attach fixed program change messages or other MIDI messages, however.

5 Usage terms and conditions

5.1 End-user license agreement (EULA) — Trial Version

INSTALLING AND USING THIS PRODUCT INDICATES YOUR ACCEPTANCE OF THESE TERMS AND CONDITIONS. IF YOU DO NOT AGREE WITH THEM, YOU SHOULD PROMPTLY UNINSTALL THIS TRIAL VERSION.

GRANT OF LICENSE. Entel Ltd. ("Entel") / Inspired Acoustics grants to you, the Licensee, a free, nonexclusive, nontransferable license to have one person use the enclosed Inspired Acoustics trial software product (the "Product"). All rights not expressly granted to Licensee are reserved to Entel.

OWNERSHIP OF THE PRODUCT. Portions of the Product may incorporate certain material proprietary to third parties. Entel and licensors of Entel own and will retain all title, copyright, trademark and other proprietary rights in and to the Product. This License is not a sale of the Product or any copy of it. You, the Licensee, obtain only such rights as are provided in this Agreement. You understand and agree as follows: you may not make any copies of all or any part of the Product except for archival copies of the computer software components of the Product as permitted by law; you may not reverse compile/assemble/engineer, modify, or incorporate in whole or in part in any other product or create derivative works of similar purpose of the Product based on all or any part of the Product; you may not remove any copyright, trademark, proprietary rights, disclaimer or warning notice included on or embedded in any part of the Product; you may not transfer or resell the Product. This license expressly forbids resale, re-licensing or other distribution of the Product. You cannot sell, loan, rent, lease, assign or transfer all or any of the enclosed sounds in the Product to another user, or for use in any competitive product(s). If transferred, in whole or in part, the original and subsequent owners forfeit all rights to use the software; you may not use the documentation for any purpose other than to support your use of the Product; you may not perform engineering analyses of the Product, including quality, performance or benchmark analyses, without the written permission of Entel.

USE OF AUDIO SAMPLES. The audio samples, recorded sounds, programs, presets used by or included in the Product remain the property of Entel and are licensed, not sold, to you for use on your computer. THIS PRODUCT CANNOT BE USED FOR COMMERCIAL PURPOSES OF ANY KIND. FURTHERMORE, LICENSEE IS STRICTLY FORBIDDEN TO: (1) FALSELY REPRESENT THAT A DERIVATIVE WORK, SUCH AS BUT NOT LIMITED TO A SOUND RECORDING OR A MOVIE SOUNDTRACK CREATED USING THIS PRODUCT, WAS PLAYED ON THE ACTUAL INSTRUMENT THE PRODUCT IS VIRTUALIZED FROM OR ANY OTHER REAL INSTRUMENT WHATSOEVER; (2) DOWNLOAD OR USE THE SAMPLES IN DIFFERENT FORMAT OR WITH DIFFERENT SOFTWARE THE PRODUCT WAS ORIGINALLY DESIGNED FOR. LICENSEE IS STRICTLY FORBIDDEN TO DISPLAY OR USE FOR ANY PURPOSE OR IN CONNECTION WITH ANY OF LICENSEE'S DERIVATIVE WORKS THE NAME(S) OR OTHER REPRESENTATIONS OF (1) THE HALLS, INSTITUTIONS OR LOCATIONS OF THE INSTRUMENT(S) FROM WHERE THE PRODUCTS ARE VIRTUALIZED FROM; (2) THE PLACE OF THESE LOCATIONS; OR (3) THE MANUFACTURER(S) OF THE ORIGINAL INSTRUMENTS.

RESPONSIBILITIES. Entel hopes the Product will be useful to your trial and personal endeavors. However, Entel does not warrant the operation of the Product or the accuracy or completeness of any information contained in the Product. You, and not Entel, are responsible for all uses of the Product.

LIMITED WARRANTY. Entel does not warrant that the Product will be error free, nor that all program errors will be corrected. In addition, Entel makes no warranties if the failure of the Product results from accident, abuse or misapplication. Entel makes no other warranties, express, implied or arising by custom or trade usage, and specifically disclaims the implied warranties of non-infringement, merchantability or fitness for any particular purpose. Entel shall not be responsible for the performance of the Product nor for any liability to any other party arising out of use of the Product. Entel's liability in contract, tort or otherwise arising in connection with the Product shall not exceed the purchase price of the Product. In no event shall Entel be liable for special, incidental, tort or consequential damages including any damages resulting from loss of use, loss of data, loss of profits or loss of business arising out of or in connection with the performance of the Product, even if Entel has been advised of the possibility of such damages.

TERMINATION. This License Agreement will terminate immediately if you breach any of its terms. Upon termination, you will be required promptly to return to Entel or to destroy all copies of the Product covered by this License Agreement.

GOVERNING LAW. The terms of this License shall be construed in accordance with the substantive laws of Hungary (European Union).

NO WAIVER. The failure of either party to enforce any rights granted in this Agreement or to take any action against the other party in the event of any breach of this Agreement shall not be deemed a waiver by that party as to subsequent enforcement of rights or subsequent actions in the event of future breaches.

LITIGATION EXPENSES. If any action is brought by either party to this Agreement against the other party regarding the subject matter hereof, the prevailing party shall be entitled to recover, in addition to any other relief granted, reasonable attorneys' fees and litigation expenses.

UNENFORCEABLE TERMS. Should any term of this License Agreement be declared void or unenforceable by any court of competent jurisdiction, such declaration shall have no effect on the remaining terms hereof.

YOU ACKNOWLEDGE THAT YOU HAVE READ THIS LICENSE AGREEMENT, UNDERSTAND IT AND AGREE TO BE BOUND BY ITS TERMS AND CONDITIONS. YOU FURTHER AGREE THAT IT IS THE COMPLETE AND EXCLUSIVE STATEMENT OF THE LICENSE AGREEMENT BETWEEN YOU AND ENTEL WHICH SUPERSEDES ANY PROPOSALS, OR PRIOR AGREEMENT, ORAL OR WRITTEN, AND ANY OTHER COMMUNICATIONS BETWEEN YOU AND ENTEL RELATING TO THE SUBJECT MATTER OF THIS LICENSE AGREEMENT.

6 Partners and credits

Created by

Csaba Huszty, Péter Balázs, Zsolt Albert, Reiner Suikat, Attila Amer, Balázs Wéner, Tamás Kun, Szabolcs Varga, Stephen Phillips, Joseph Felice

Thanks

Gábor Huszty, Gergely Huszty, Norbert Balog, István Baróti, László Fassang, András Csonka, Nikoletta Csapó, Anna Tóth, Tamás Vadas, Péter Kováts, Antal Végh, Attila Budavári, Géza Markovich, Gergely Lakatos, Gábor Zoboki, Dániel Lakos, Bálint Karosi, Dóra Pordán, Zsuzsa Pető, Martin Dyde and Brett Milan

Special thanks

Pécsi Organ-Building Manufacture Ltd, Werkstätte für Orgelbau Mühleisen GmbH, and the staff of the Palace of Arts – Budapest

Some photos are courtesy of Palace of Arts – Budapest.

